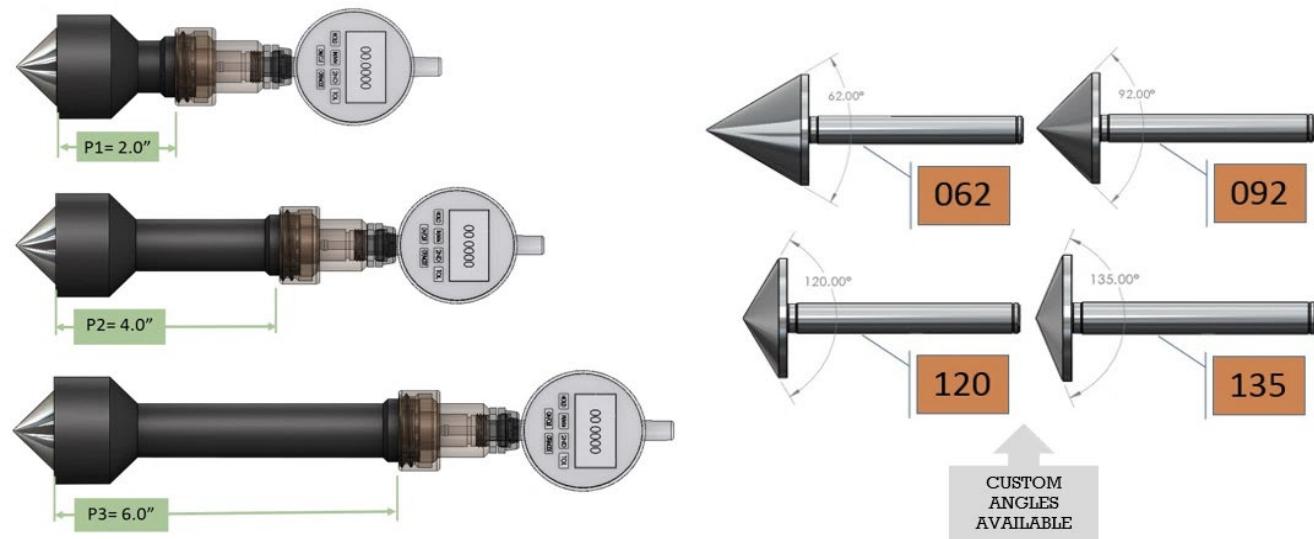
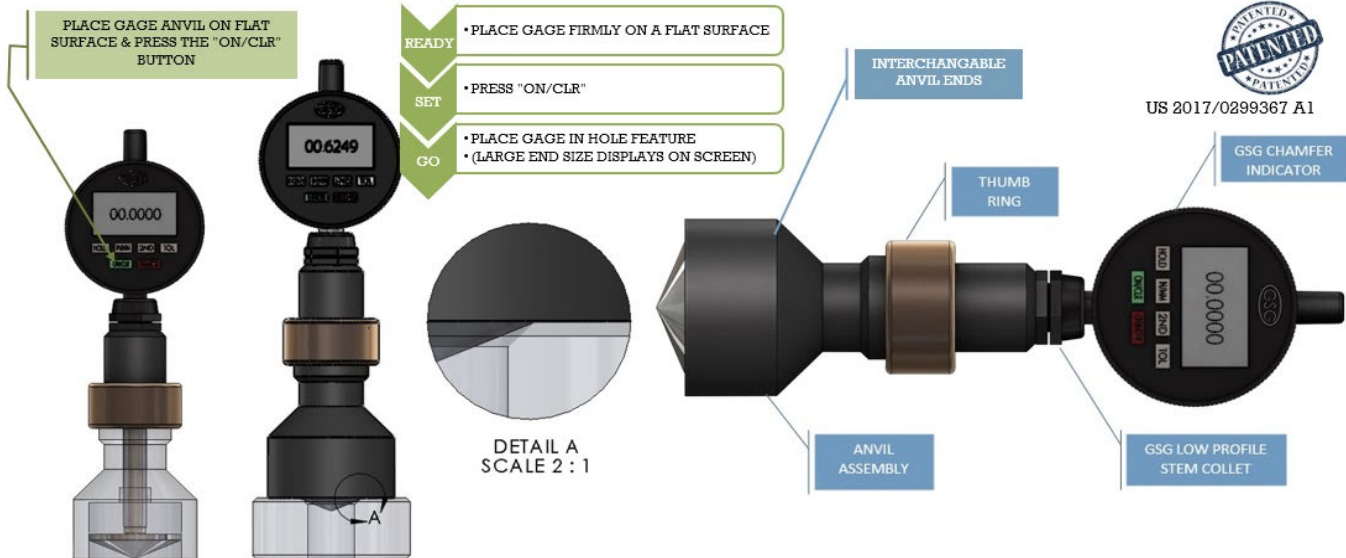




# GSG CHAMFER GAGE - ORDERING GUIDE



Click on the code to see the interactive Chamfer Gage Catalog

The GSG Digital Chamfer Gage is sold as separate components. When placing a chamfer gage order you must purchase a **GAGE BODY** (shown to the left) along with an anvil end.

Each **GAGE BODY** is programmed for the desired angle anvil(s). Once they have been programmed at our factory they are dedicated to that particular angle.  
After purchasing for a particular anvil angle, you can then purchase other diameter anvils but they must be the same angle that the gage was initially purchased for.

Anvils are available individually in both standard and custom sizes or they can be purchased in sets. (see page 41)

## NEW ITEM

Part #	Product Description	Price
GSG150CGB	GSG Indicator Body	\$ 645.00

## GSG DIGITAL CHAMFER GAGE

The all new GSG Digital Chamfer Gage can be provided with any angle and any diameter. Buy several anvils and go from one feature check to another in as little as 20 seconds with a repeatability of .0001"

The most accurate and versatile chamfer gage on the market. Can be customized for virtually any hole feature.



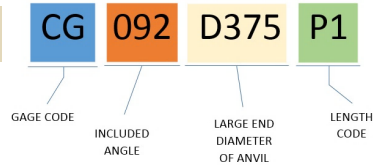
- Hard Programmed Ratio Measuring Mode
- SPC Cables USB, MTI, RS232
- Measuring System in English or Metric
- Travel Reverse
- Auto Off
- Rotating Bezel
- T.I.R. Measuring with Low & High Storage Recall
- Powered by Batteries, AC Jack or Output Cable
- User Tolerance Settings
- Inch/Metric Display Conversion
- Large LCD Display
- Maximum Reading Hold
- Display / Freeze Reading Hold
- Extra Large Number Display

**CUSTOM ANVIL CONFIGURATIONS TO MATCH YOUR APPLICATION!**

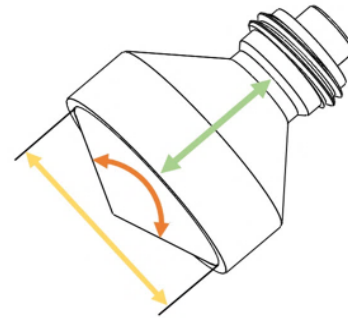


## GSG CHAMFER GAGE - INDIVIDUAL ANVILS

\* Must be purchased with "GAGE BODY" found on page 41.



ITEM #	ANGLE (Included)	LARGE END DIAMETER	P1 LENGTH 2.00"	P2 LENGTH 4.00"	P3 LENGTH 6.00"
CG062D0375	62° ANVIL	0.3750	\$ 235.00	\$ 335.00	\$ 435.00
CG062D0500	62° ANVIL	0.5000	\$ 260.00	\$ 370.00	\$ 470.00
CG062D0750	62° ANVIL	0.7500	\$ 300.00	\$ 390.00	\$ 490.00
CG092D0375	92° ANVIL	0.3750	\$ 235.00	\$ 335.00	\$ 435.00
CG092D0500	92° ANVIL	0.5000	\$ 270.00	\$ 370.00	\$ 470.00
CG092D0750	92° ANVIL	0.7500	\$ 310.00	\$ 395.00	\$ 595.00
CG092D1250	92° ANVIL	1.2500	\$ 330.00	\$ 430.00	\$ 615.00
CG092D1500	92° ANVIL	1.5000	\$ 350.00	\$ 505.00	\$ 635.00
CG120D0750	120° ANVIL	0.7500	\$ 310.00	\$ 395.00	\$ 420.00
CG120D1500	120° ANVIL	1.5000	\$ 345.00	\$ 510.00	\$ 540.00
CG120D2500	120° ANVIL	2.5000	\$ 475.00	\$ 575.00	\$ 660.00
CG120D3250	120° ANVIL	3.2500	\$ 565.00	\$ 765.00	\$ 795.00
CG135D0750	135° ANVIL	0.7500	\$ 310.00	\$ 410.00	\$ 440.00
CG135D1500	135° ANVIL	1.5000	\$ 355.00	\$ 520.00	\$ 590.00
CG135D2500	135° ANVIL	2.5000	\$ 485.00	\$ 606.00	\$ 675.00
CG135D3500	135° ANVIL	3.5000	\$ 595.00	\$ 675.00	\$ 815.00



## GSG CHAMFER GAGE - 3 PIECE "P1" SETS

(INCLUDES 1- GSG DIGITAL INDICATOR BODY AND ANVILS SHOWN IN THE CHART BELOW)

ITEM #	ANGLE (Included)	LENGTH	INCLUDES .375 DIA. ANVIL	INCLUDES .500 DIA. ANVIL	INCLUDES .750 DIA. ANVIL	INCLUDES 1.50 DIA. ANVIL	INCLUDES 2.50 DIA. ANVIL	PRICING
CG062P1	62° ANVIL	2.00	✓	✓	✓	X	X	\$ 1,627.00
CG092P1	92° ANVIL	2.00	✓	✓	✓	X	X	\$ 1,652.00
CG120P1	120° ANVIL	2.00	X	X	✓	✓	✓	\$ 1,850.00
CG135P1	135° ANVIL	2.00	X	X	✓	✓	✓	\$ 1,872.00

\*ADDITIONAL SETS AVAILABLE ON-LINE



For the full digital catalog of GSG Chamfer Gage attachments scan this code

## CHAMFER GAGE ACCESSORIES

### ABS STORAGE CASES



It is unbreakable, watertight, airtight, dustproof, chemical resistant and corrosion proof. Our cases are constructed to protect your gages and prevent damage and corrosion.

High Impact structural copolymer that makes it extremely strong and durable. Its exclusive 1/4" (6.4 mm) neoprene o-ring and ABS latches seal perfectly

We waterjet the cutouts in the foam to conform to your gage ensuring a perfect fit.

#### Case Prices

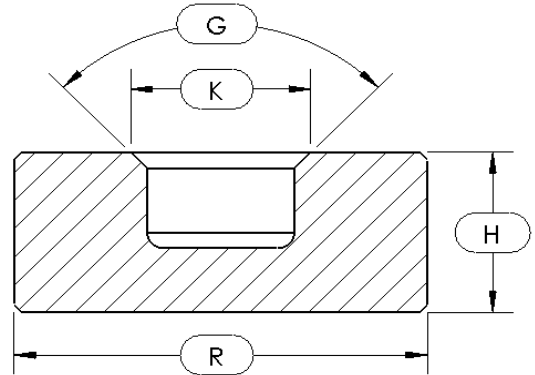
Part #	Product	Price
CG1050	Chamfer Gage	\$ 199.00

\*We can provide custom ABS cases on just about any product we manufacture  
Pricing is upon request for products not listed.

**Tighter L.E. Tolerance Available**  
**Call Factory for pricing and availability**

### CHAMFER RING MASTERS (±.0005 L.E. TOLERANCE W/CERTIFICATION)

**ISO17025 CERTIFICATION NOT AVAILABLE FOR THIS PRODUCT**



ITEM #	G	K	H	R	THRU HOLE SIZE	INCLUDES CERT.	A2 STEEL Rc58-62	CARBIDE W/STEEL JACKET
TPG90K250	90° INCLUDED	0.250	0.500	1.750	0.125	✓	\$ 230.00	\$ 385.00
TPG90K375	90° INCLUDED	0.375	0.500	1.750	0.200	✓	\$ 241.00	\$ 400.00
TPG90K500	90° INCLUDED	0.500	0.500	1.750	0.250	✓	\$ 253.00	\$ 415.00
TPG90K750	90° INCLUDED	0.750	0.750	2.000	0.500	✓	\$ 265.00	\$ 430.00
TPG90K100	90° INCLUDED	1.000	1.000	2.500	0.750	✓	\$ 278.00	\$ 446.00
TPG90K125	90° INCLUDED	1.250	1.000	2.500	1.000	✓	\$ 291.00	\$ 463.00
TPG90K150	90° INCLUDED	1.500	1.500	3.000	1.250	✓	\$ 305.00	\$ 481.00
TPG90K175	90° INCLUDED	1.750	1.500	3.500	1.500	✓	\$ 320.00	\$ 500.00
TPG90K200	90° INCLUDED	2.000	1.750	3.500	1.750	✓	\$ 336.00	\$ 520.00

**FOR CUSTOM SIZES CONTACT FACTORY**

\*All Chamfer Masters come standard with flat lapped bottom

### INDICATOR COLLETS



**Lowest Profile Indicator Collet on the market!**  
Don't use up your indicator travel with a standard collet...

The GSG Indicator Collet is the lowest profile collet on the market. This allows for maximum travel to be obtained by utilizing the full throw allowed on the indicator stem. Total stick out is .500" when mounted by the 5/8-18 thread. Available for both 3/8 (9.5mm) and 5/16" (7.9mm) indicator stems

#### Low Profile Collets

Part #	STEM DIAMETER	Price
CH375	3/8	\$ 25.00
CH312	5/16	\$ 25.00



For the full digital catalog of GSG Chamfer Gage attachments scan this code